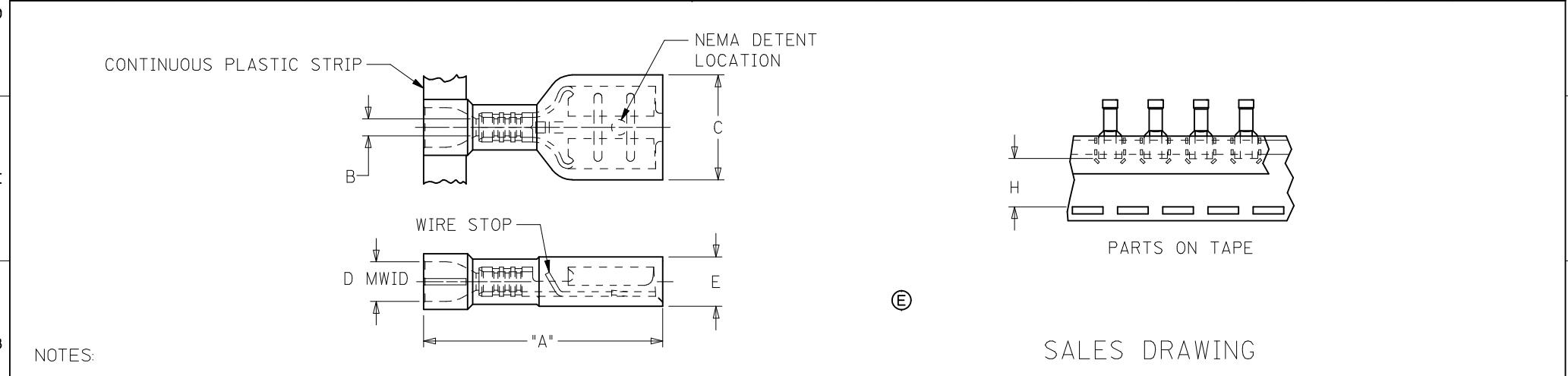


| 10 | 9 | 8 | 7 | 6 | 5 | 4 | 3 | 2 | 19003 | | | | | | |
|-----------------------------|---------------------------|----------------------------------|--------------------------------|----------------------------|--------------------------|----------------|-----------------------|------------------|--------------|-----------|-----------|----------|-----------|----------|-------------|
| LOOSE PIECE MATERIAL NUMBER | LOOSE PIECE ENGRNG NUMBER | CONTINUOUS STRIP MATERIAL NUMBER | CONTINUOUS STRIP ENGRNG NUMBER | MYLAR TAPE MATERIAL NUMBER | MYLAR TAPE ENGRNG NUMBER | WIRE RANGE AWG | FITS MALE TAB SIZE | INSULATION COLOR | STOCK THICK. | "A" MAX. | "B" MIN. | "C" MAX. | "D" MWID | "E" MAX. | "H" NOMINAL |
| 190030071 | M-2212 | 190030106 | M-2212C | 190030073 | M-2212T | 26-24 | .250x.032 (6.35x0.81) | YELLOW | .016/0.41 | .86/21.8 | .030/0.76 | .38/9.7 | .075/1.90 | .18/4.6 | .560/14.22 |
| 190030064 | M-2210 | 190030103 | M-2210C | 190030067 | M-2210T | 26-24 | .187x.020 (4.75x0.51) | YELLOW | .016/0.41 | .78/19.8 | .030/0.76 | .32/8.1 | .075/1.90 | .16/4.1 | .600/15.24 |
| 190030068 | M-2211 | 190030104 | M-2211C | 190030070 | M-2211T | 26-24 | .187x.032 (4.75x0.81) | DK YELLOW (E) | .016/0.41 | .78/19.8 | .030/0.76 | .32/8.1 | .075/1.90 | .16/4.1 | .600/15.24 |
| 190030001 | AA-2201 | 190030105 | AA-2201C | 190030003 | AA-2201T | 22-18 | .250x.032 (6.35x0.81) | RED | .016/0.41 | .86/21.8 | .058/1.47 | .38/9.7 | .135/3.43 | .18/4.6 | .560/14.22 |
| 190030036 | AA-2213 | 190030109 | AA-2213C | 190030074 | AA-2213T | 22-18 | .205x.020 (5.21x0.51) | RED | .016/0.41 | .78/19.8 | .058/1.47 | .32/8.1 | .135/3.43 | .16/4.1 | .600/15.24 |
| 190030038 | AA-2214 | 190030110 | AA-2214C | 190030075 | AA-2214T | 22-18 | .205x.032 (5.21x0.81) | PINK (E) | .016/0.41 | .78/19.8 | .058/1.47 | .32/8.1 | .135/3.43 | .16/4.1 | .600/15.24 |
| 190030011 | AA-2202 | 190030107 | AA-2202C | 190030013 | AA-2202T | 22-18 | .187x.020 (4.75x0.51) | RED | .016/0.41 | .78/19.8 | .058/1.47 | .32/8.1 | .135/3.43 | .16/4.1 | .600/15.24 |
| 190030017 | AA-2203 | 190030108 | AA-2203C | 190030020 | AA-2203T | 22-18 | .187x.032 (4.75x0.81) | PINK (E) | .016/0.41 | .78/19.8 | .058/1.47 | .32/8.1 | .135/3.43 | .16/4.1 | .600/15.24 |
| 190030024 | AA-2204 | 190030097 | AA-2204C | 190030026 | AA-2204T | 22-18 | .110x.020 (2.79x0.51) | RED | .012/0.30 | .78/19.8 | .058/1.47 | .23/5.9 | .135/3.43 | .15/3.8 | .615/15.62 |
| 190030030 | AA-2205 | 190030098 | AA-2205C | 190030032 | AA-2205T | 22-18 | .110x.032 (2.79x0.81) | PINK (E) | .012/0.30 | .78/19.8 | .058/1.47 | .23/5.9 | .135/3.43 | .15/3.8 | .615/15.62 |
| 190030040 | BB-2206 | 190030041 | BB-2206C | 190030042 | BB-2206T | 16-14 | .250x.032 (6.35x0.81) | BLUE | .016/0.41 | .86/21.8 | .083/2.10 | .38/9.7 | .160/4.06 | .18/4.6 | .560/14.22 |
| 190030062 | BB-2215 | 190030085 | BB-2215C | 190030077 | BB-2215T | 16-14 | .205x.020 (5.21x0.51) | BLUE | .016/0.41 | .78/19.8 | .083/2.10 | .32/8.1 | .160/4.06 | .17/4.3 | .600/15.24 |
| 190030063 | BB-2216 | 190030086 | BB-2216C | 190030078 | BB-2216T | 16-14 | .205x.032 (5.21x0.81) | AQUA (E) | .016/0.41 | .78/19.8 | .083/2.10 | .32/8.1 | .160/4.06 | .17/4.3 | .600/15.24 |
| 190030050 | BB-2207 | 190030051 | BB-2207C | 190030052 | BB-2207T | 16-14 | .187x.020 (4.75x0.51) | BLUE | .016/0.41 | .78/19.8 | .083/2.10 | .32/8.1 | .160/4.06 | .17/4.3 | .600/15.24 |
| 190030056 | BB-2208 | 190030057 | BB-2208C | 190030058 | BB-2208T | 16-14 | .187x.032 (4.75x0.81) | AQUA (E) | .016/0.41 | .78/19.8 | .083/2.10 | .32/8.1 | .160/4.06 | .17/4.3 | .600/15.24 |
| 196060002 | 19606-0002 | 196060001 | 19606-0001 | 196060003 | 19606-0003 | 12-10 | .250x.032 (6.35x0.81) | YELLOW | .018/0.46 | 1.03/26.1 | .120/3.04 | .38/9.7 | .235/5.97 | .22/5.6 | .508/12.90 |



NOTES:

- MATERIAL: TERMINAL: BRASS
PLATING: ELECTRO-TIN
FERRULE: BRASS
PLATING: ELECTRO-TIN
INSULATION: NYLON 6/6 94V-2.
COLOR: SEE CHART
- MWID = MAXIMUM WIRE INSULATION DIAMETER

(E)3. PARTS ARE ROHS COMPLIANT.

SALES DRAWING

| | | | | | | | | | | |
|---|--------------------------------|---|-------|--------------------------|------------------|---|----------------------|-------------------------------------|--|--|
| CHANGE HSG COLORS EC NO: WNA2008-0135 DRAWN: HTHRODAHL 2008/09/23 CHKD: JMACNEIL 2008/09/23 APPR: JMACNEIL 2008/09/25 | QUALITY SYMBOLS ▽=0 ▽7=0 | GENERAL TOLERANCES (UNLESS SPECIFIED) | | DIMENSION STYLE IN/MM | | SCALE --- | DESIGN UNITS INCH | THIRD ANGLE PROJECTION | | |
| | | mm | INCH | DRAWN BY BRE | DATE 02/03/20 | TITLE INSULKRIMP FEMALE FIQD STANDARD FLARE | | | | |
| | | 4 PLACES ± --- | ± --- | CHECKED BY HEB | DATE 02/03/20 | | | | | |
| | | ANGULAR ± ---° | | APPROVED BY RWD | DATE 02/03/20 | MATERIAL NO. SEE CHART | | DOCUMENT NO. SD-19003-005 | | |
| DRAFT WHERE APPLICABLE MUST REMAIN WITHIN DIMENSIONS | | THIS DRAWING CONTAINS INFORMATION THAT IS PROPRIETARY TO MOLEX INCORPORATED AND SHOULD NOT BE USED WITHOUT WRITTEN PERMISSION | | | | | | | | |